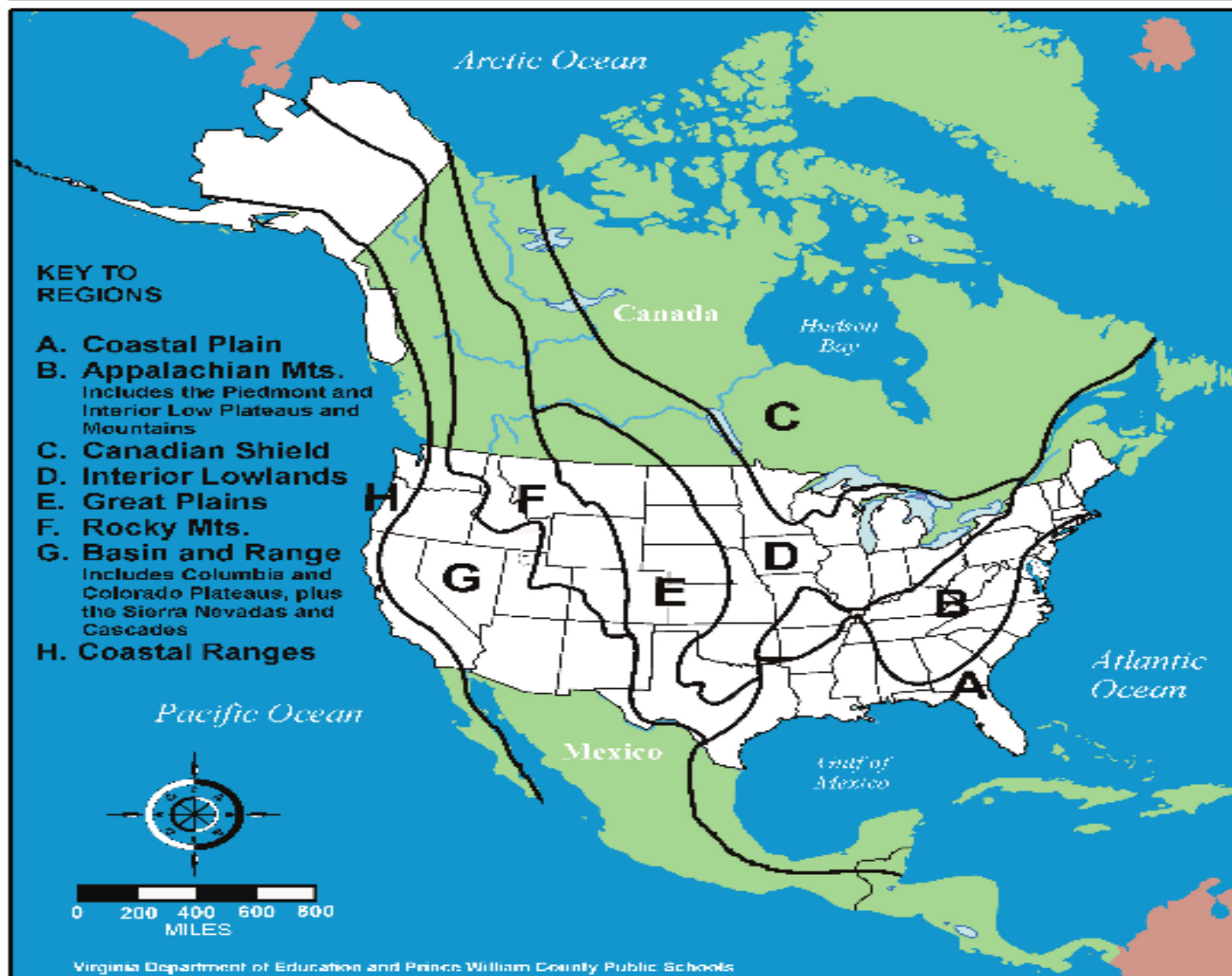


Geographical Regions

Along with ISN page 17

North America

Geographic Regions



Coastal Plain

Located along the Atlantic ocean
and gulf of Mexico.

Broad lowland providing many
excellent harbors.

Figure 10. View of the coastal plain from the Acropolis 1.

Appalachian Highlands

Located west of the Coastal Plain

Old, eroded mountains



Canadian Shield

Wraps around hudson bay in a horseshoe shape

Hills worn by erosion and hundreds of lakes carved by glaciers

Holds some of the oldest rock formations in north america.

Interior Lowland

Located west of the appalachian mountains and east of the great plains
Rolling flatlands with many rivers, broad river valleys, and grassy hills.



Driftboats ply the river in search of trout below Holter Dam.

Great Plains

Located west of interior lowlands and east of the rocky mountains.

Flat land that gradually increase in elevation westward; grasslands.





Rocky mountains

Located west of the great plains and east of the Basin and range.

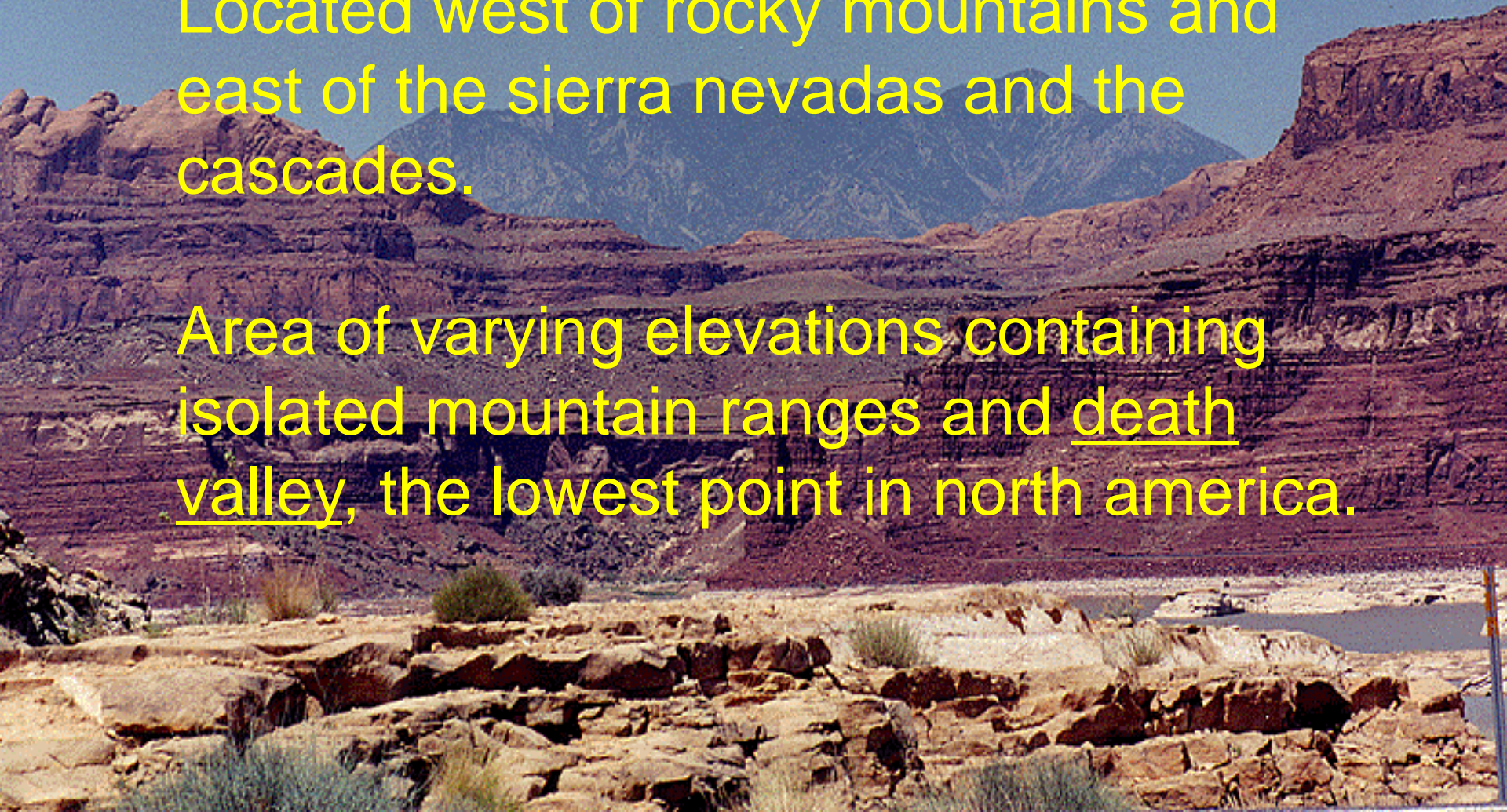
Rugged mountains stretching from alaska to mexico; high elevations.

Contains the continental divide, which determines the directional flow of rivers.

Basin and Range

Located west of rocky mountains and east of the sierra nevadas and the cascades.

Area of varying elevations containing isolated mountain ranges and death valley, the lowest point in north america.



Coastal Range

Rugged mountains along the pacific coast that stretch from california to canada.

Contains fertile valleys.